



UNIVERSIDAD
**PABLO DE
OLAVIDE**
S E V I L L A

Centro
Andaluz
de Biología
del Desarrollo



Prohibitinas y estrés mitocondrial: impacto en el envejecimiento y estado nutricional

TFG 2023-2024

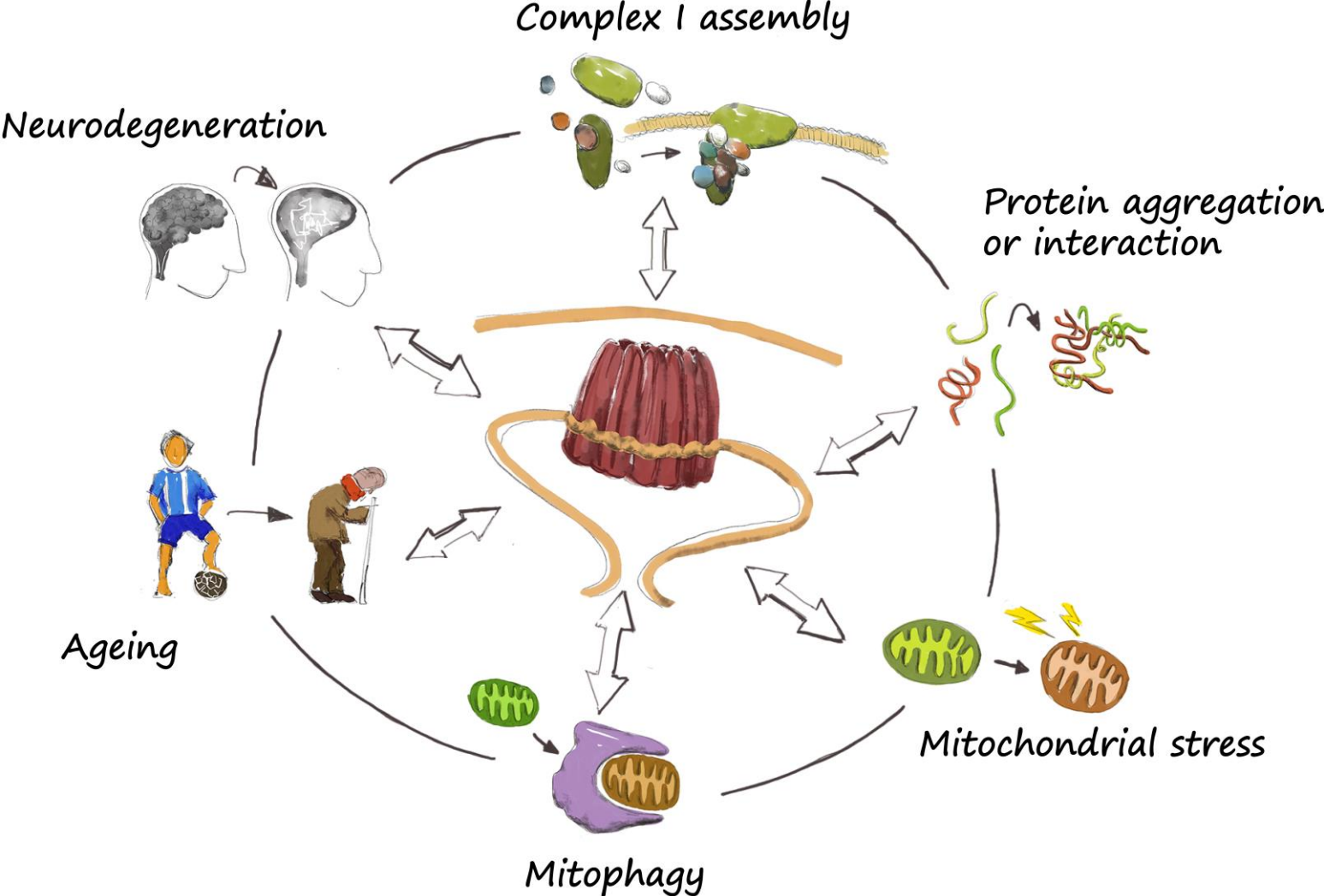
Supervisores: Jesús Fernández Abascal, PhD

Marta Artal Sanz, PhD

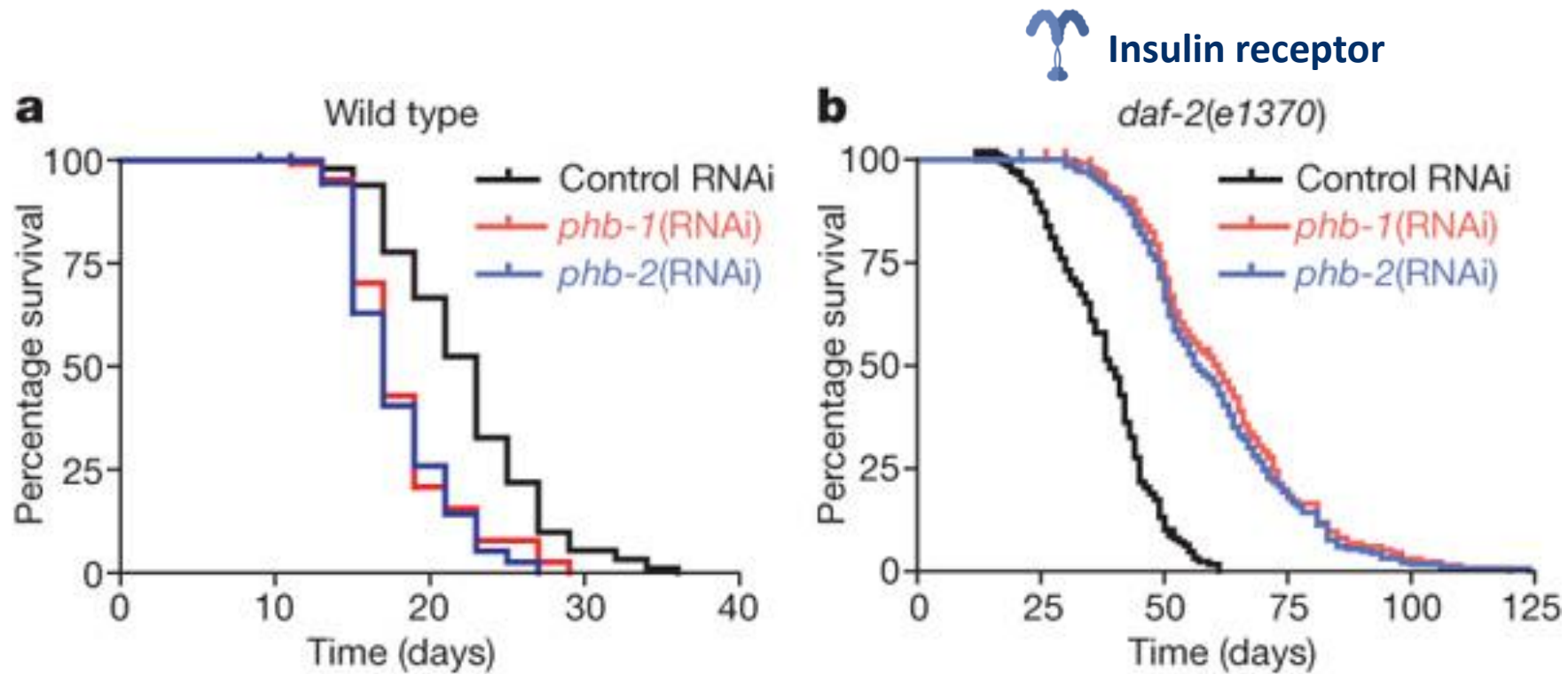
jferaba@upo.es

Laboratorio de Marta Artal Sanz

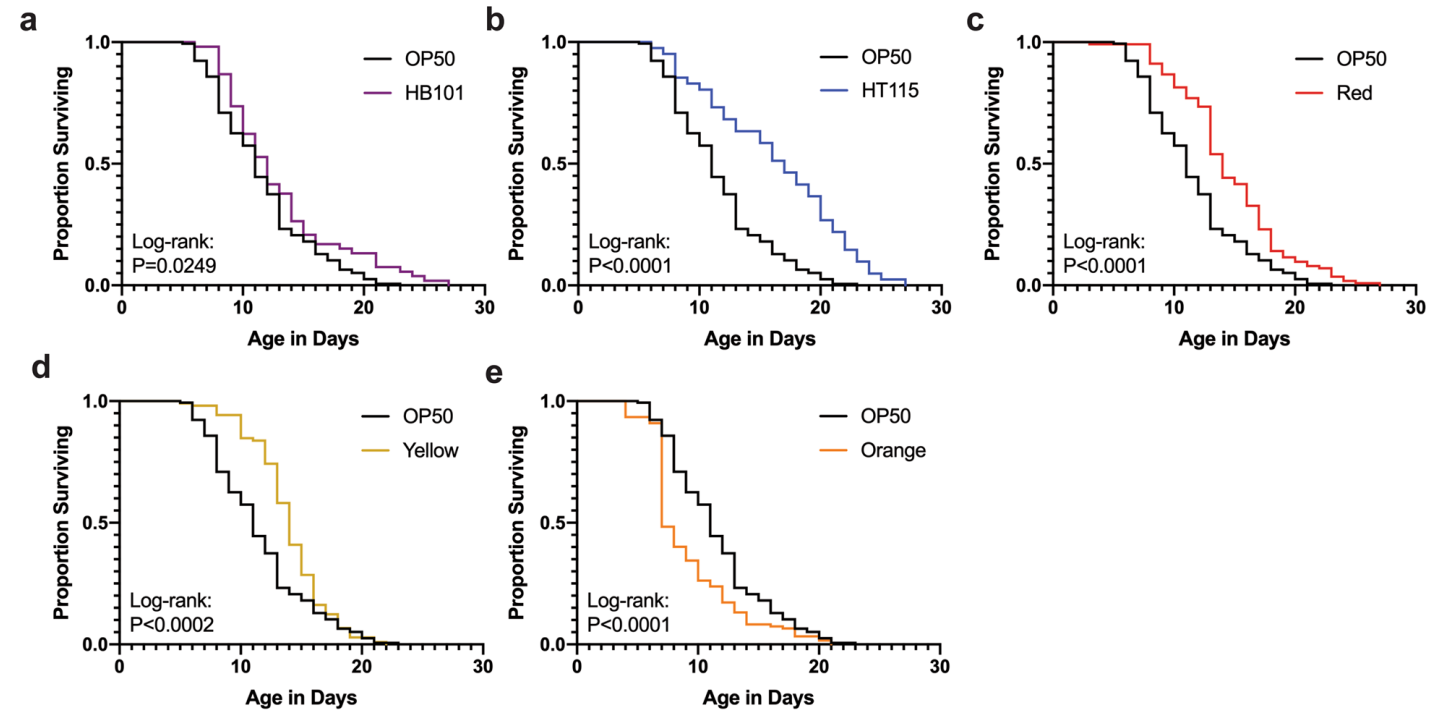
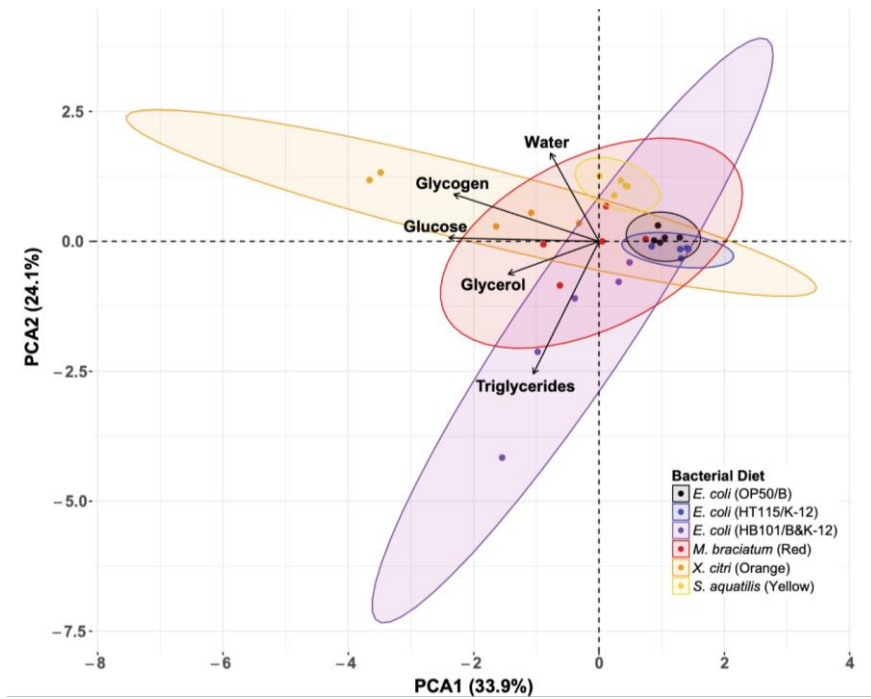
La rueda de las prohibitinas



El papel de las prohibitinas en el envejecimiento



Nutrición y envejecimiento



 OPEN ACCESS  PEER-REVIEWED

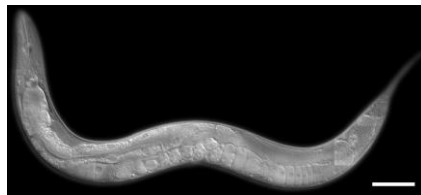
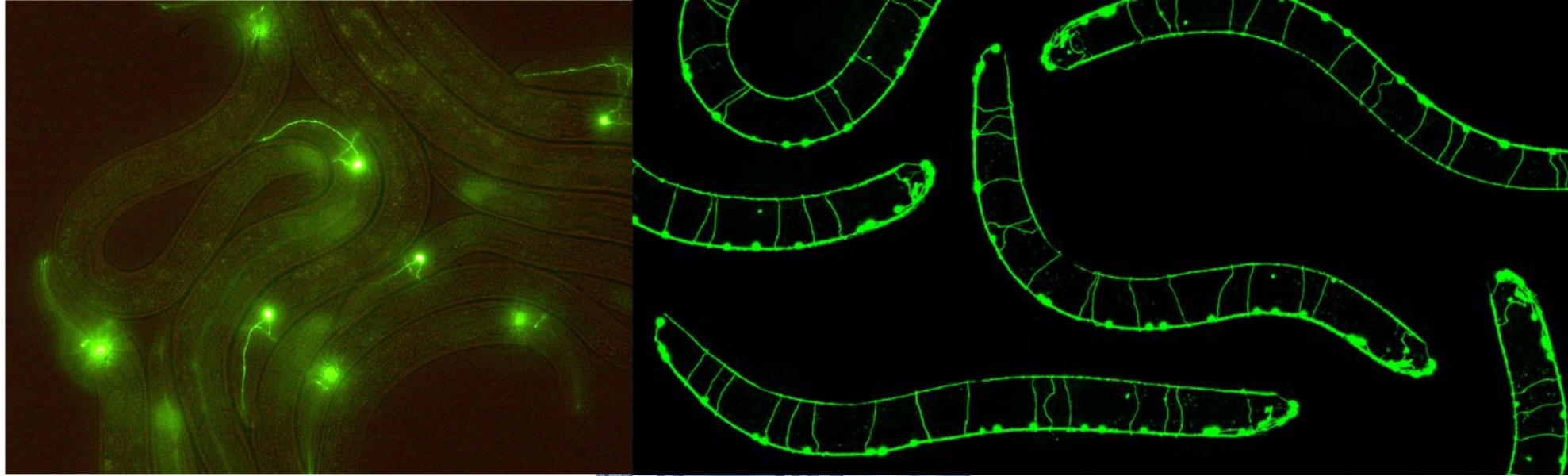
RESEARCH ARTICLE

A novel gene-diet interaction promotes organismal lifespan and host protection during infection via the mitochondrial UPR

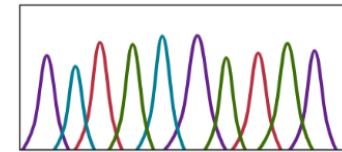
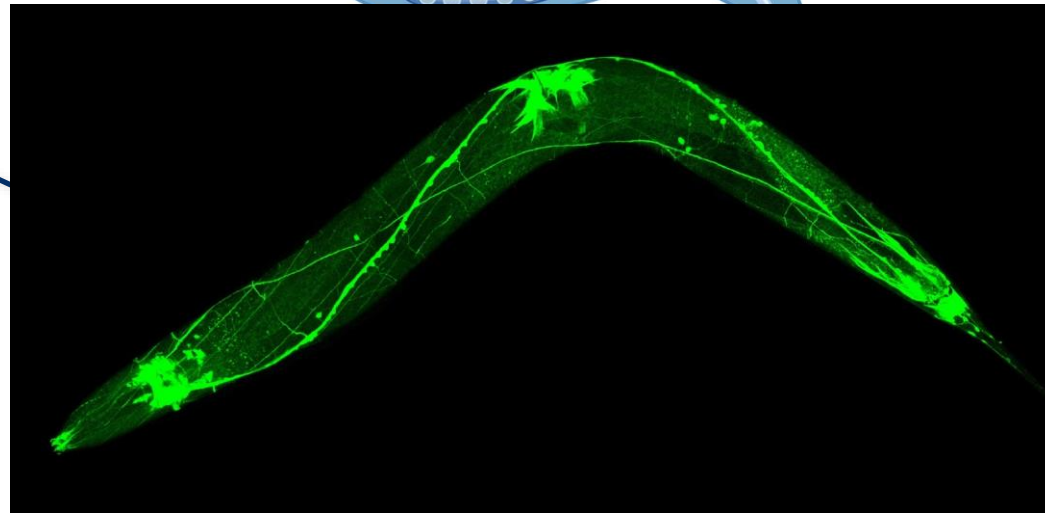
Mustafi Raisa Amin , Siraje Arif Mahmud , Jonathan L. Dowgielewicz, Madhab Sapkota, Mark W. Pellegrino 

**Estudiar el impacto nutricional en el
envejecimiento del estado nervioso**

C. elegans como organismo modelo



Transparent body

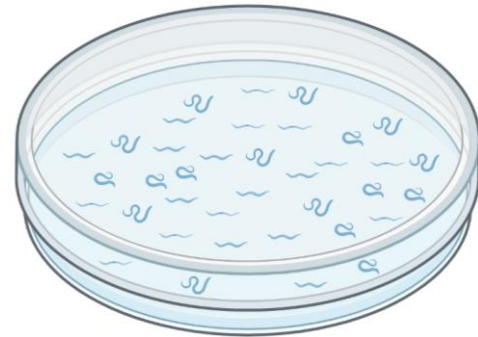


G A C T A G T C T G

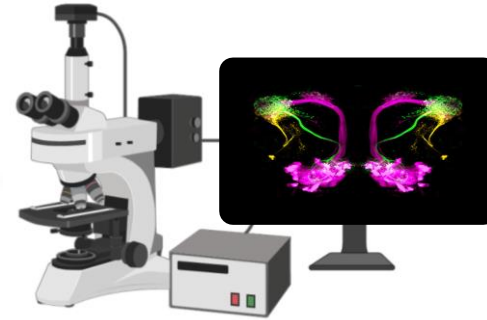


Sequenced genome

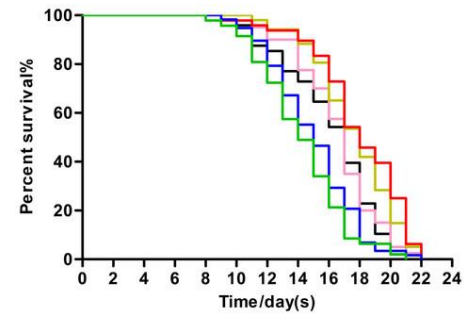
¿Qué vas a hacer/aprender?



Cultivo con diferentes suplementos alimenticios



Imaging analysis



Lifespan assays

Questions?