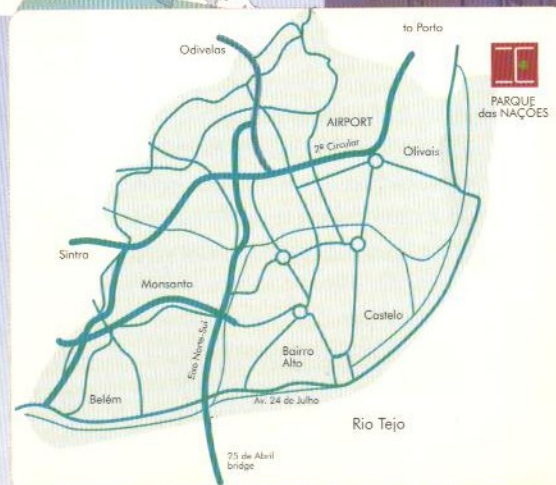


Escola Superior de Tecnologia da Saúde de Lisboa  
Av. D. João II, Lote 4.69.01, Parque das Nações,  
1990-096 Lisboa, PORTUGAL

LLP Erasmus Coordinator - Prof.<sup>a</sup> Adj.<sup>a</sup> Rute Borrego

International Relations Office | Phone: + 351 218 980 420  
Fax: + 351 218 980 460  
international@estesl.ipl.pt



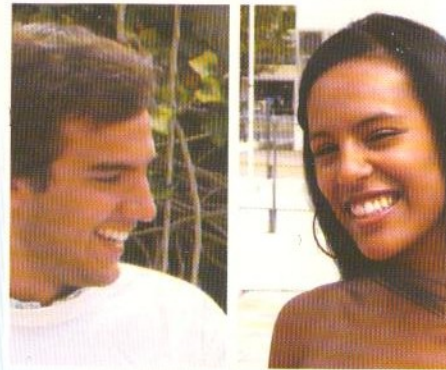


Commitment in teaching with quality, together with the gathered years of International Cooperation with partners Universities and Schools and Institutions across Europe, Asia, Africa and America, makes of Escola Superior de Tecnologia da Saúde de Lisboa (ESTeSL) an International Reference in Health Technologies' Academic Instruction.

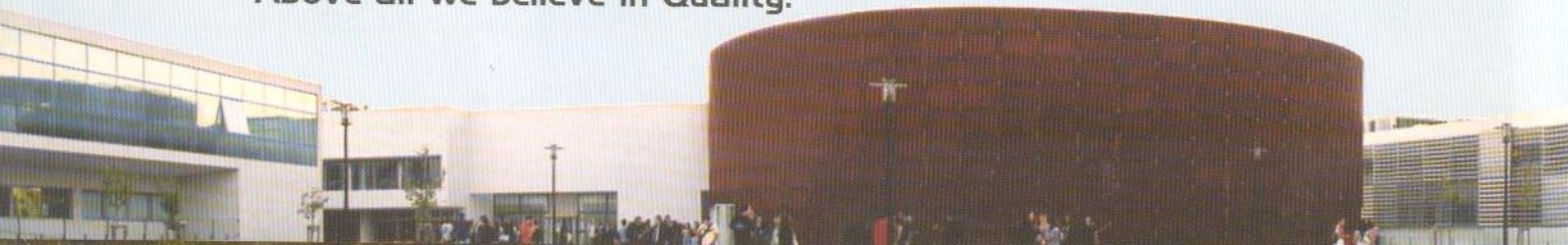
Our aim is to continue to give our contribution to Scientific and Social Development by offering our knowledge to Portuguese and International Students, Teachers and Researchers.

### Our School

Located in Lisbon, in the noble, recently built Parque das Nações, ESTeSL's facilities provides to Students, Teachers and Researchers excellent means to work in an Academic environment, with fully equipped classrooms, study rooms, library, auditorium, laboratories, social and meal areas, as well as more than 100 pedagogical collaborations with Health, Education and Investigation Institutions in order to give the best instruction to our Portuguese and International Students.



Above all we believe in Quality.





**Degree Programmes**



Clinical Analyses and Public Health



Biomedical Sciences in Histochemical Pathology



Cardiopneumology



Dietetics and Nutrition



Pharmacy



Physiotherapy



Nuclear Medicine



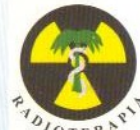
Prosthetics and Orthotics



Orthoptics



Radiology



Radiotherapy



Environmental Health

**Master Programmes**

- Applied Radiation to Health Technologies
- Cardiovascular Intervention and Technology Diagnosis, in association with Faculdade de Medicina – Universidade de Lisboa
- Physiotherapy
- Radiotherapy
- Master in Health, Work and Environment in Association with Universidade Nova de Lisboa - Escola Nacional de Saúde Pública

- Nuclear Medicine
- Occupational Health and Safety
- Social Organization and Intervention Health, in association with Universidade de Evora
- Patient Safety, in Association with Universidade Nova de Lisboa – Escola Nacional de Saúde Pública
- Management and evaluation in Health Technologies, in association with Universidade do Algarve – Escola Superior de Saúde

**It is our will and compromise to reinforce and continue to strengthen our Erasmus Programme in the Future.**

