



another life
starts here



This is where we invent life



Since its foundation in 1992, EBI has placed life at the heart of its engineering training to face the challenge of improving health, well-being, safety, adaptability and functionality through innovation.

Understanding of biological mechanisms is represented by our graduates in every engineering profession, from research to production and from innovation to market launch. This is especially true for the pharmaceutical, cosmetics, food and environment industries.

With its new eco-responsible one-hectare campus in the city centre, open 16 hours a day, EBI fully expresses its mission as a talent incubator and an open innovation melting pot. At the heart of a Technoparc that includes the Cergy sports ground and the Paris-Seine University, EBI researchers, students and postgraduates give life sciences a creative industrial dimension.

The 1000m² technical platform which is integrated into the Cosmetomics® network allows researchers and students to work side by side on professional equipment. Thanks to EBI's lecturers, tutors and qualified coaches, students learn to gain confidence in their skills and take on responsibility for several innovative projects that they present to a board of professionals. EBI students also have the opportunity to spend one year on average in various work placement positions.

The results speak for themselves: 100% of the fourth-year students are supported by business incubators in their entrepreneurship projects. Every year, four national prizes are awarded on average and over 2% of our alumni have set up their own company, which is twice the national average for graduates.

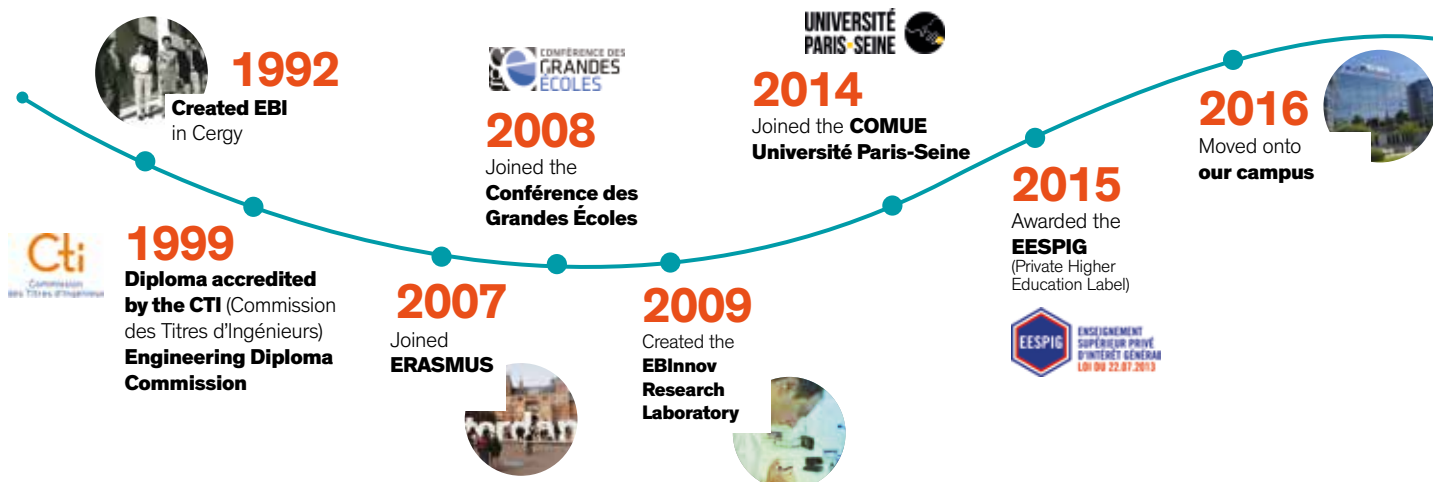
But there is so much more to EBI. The school also offers a resourceful educational background that combines industrial skills with personal, intercultural and emotional dimensions. General knowledge is developed through the Agora cultural program and linguistic skills can be improved thanks to our Babel language centre.

Each student spends at least one semester abroad and studies exclusively in English during their third year (first engineering cycle year). We also encourage artistic activities with twenty associations (for example dance, theatre, music, cinema) that, with the help of professional graduates, allow students to express themselves creatively .

EBI was the first French Grande Ecole to stop any form of ranking in order to boost team work, inspire students to use their talent to take on any challenge, and live the EBI motto: **Combining passion and career.**

Recruiters tell us our students are exceptionally talented... Experience has shown us that this talent allows them to invent creative and innovative ways of living for all of us, all over the world.

Florence Dufour,
Managing director and Founder of the EBI



Strengths of EBI students

Creative

Several national **entrepreneurship awards**, annual innovation and marketing jury at the MEDEF (Mouvement des Entreprises de France- National Council of French Employers) in Paris and a choice of 20 initiation classes

Supportive

A tutor, a mentor, **a family structure**

Multicultural

A whole year taught in English, TOEIC score set at 820, choice of 7 languages and also **5 months of training periods**, internships and residencies abroad

Entrepreneur

A minimum of 5 innovative projects per student, **complete access to FabLabs EBInnov and full access to the technopole and incubator**

Practical

13 months of work placements, **certified skills**, a professional approach, equal pay M/F

Agile

A multi-sector professional background, ability to work in any field of their choosing, coaching practice and endless development possibilities

Cooperative

A minimum of 3 projects per year, **no ranking**, working groups selected randomly and specific methodological tools implemented for the teams

Unique

Career choice
Choice of 60 elective courses
Choice of specialisation

Actor

5 artistic shows per year, pitch competitions, technical short film festival and smart phone movie festival

Associative

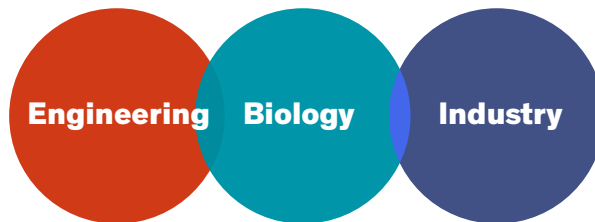
20 sports, cultural and humanitarian associations



The EBI career path... Let's go!

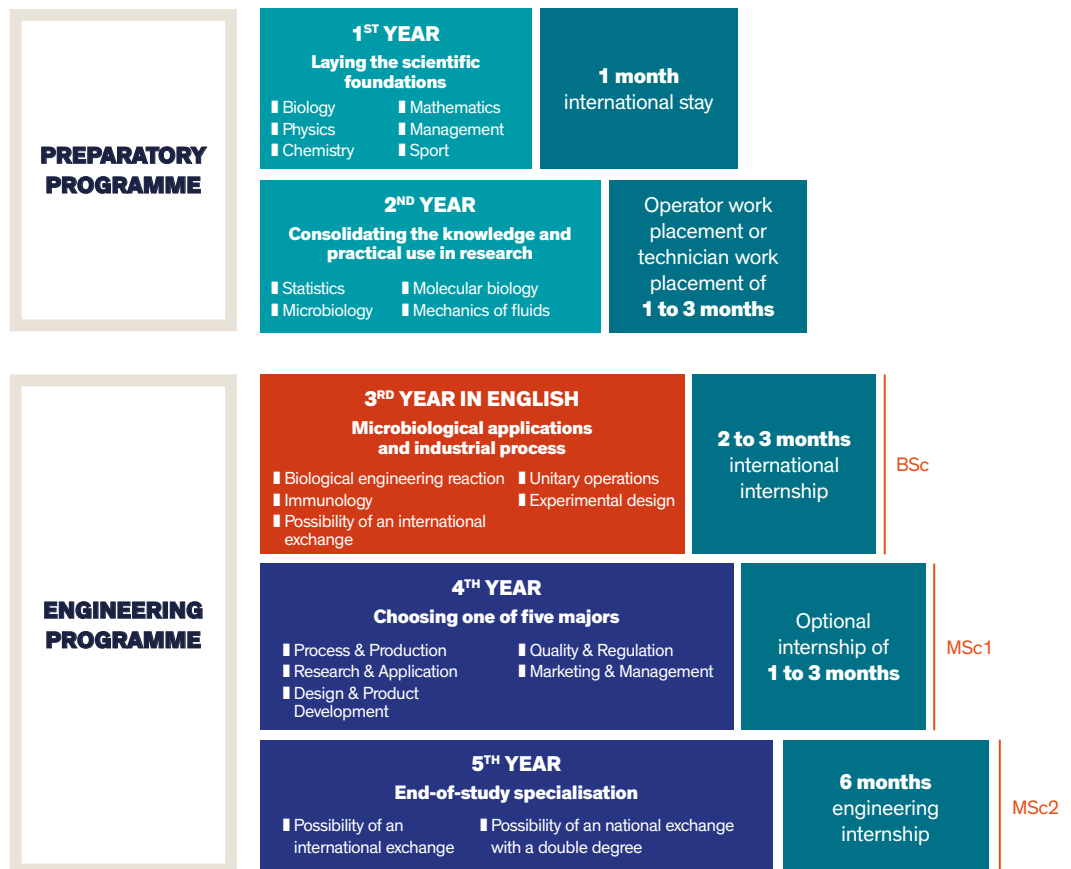
EBI's pedagogical project aims at training accessible, cooperative and expert engineers who are highly sought-after. Armed with solid scientific and technical foundations and thanks to our project-based pedagogy, our engineers develop the three engineering skills specific to EBI: **Engineering, Biology and Industry**.

They are able to develop their own professional projects based on the lectures they attend, the work they carry out in our state-of-the-art laboratories and EBI's management and self-learning techniques. These projects are also based on their cultural openness to the arts, their creativity, language skills and above all their awareness of the important issues of our time. The diversity of their choice of professions reflects their skills in the top industries.



44
permanent teachers

3,430
training hours per students



High-end specialisations

In the second half of the fourth year, students can choose from five majors depending on their professional project.

EBI, unlike other schools, does not apply any quotas to their majors, so students are completely free to choose their own career path. Attending the lectures of their major is compulsory, whereas those for the minors are elective. EBI students can choose between four to ten minors to customise their career path, thus allowing them to develop a unique and multi-skilled profile.

Inventing

Major in Research & Application

Aimed at training engineers who will work in the biomedical sector, on vaccines, biotechnologies, enzyme kits, cellular models. Students following this major can work as a team manager in a laboratory. This major is also suitable for PhD studies.



Creating

Major in Design & Product Development

Students acquire the skills to formulate consumer goods in laboratories: mixing reagents, molecules, assessing the aspect, perfume, colour, texture and taste. The aim is to create a perfectly packaged product that is both useful and pleasant for the consumer.



Producing

Major in Processes & Production

The engineers are trained to implement the best-adapted manufacturing processes. Their aim is to manufacture in bulk what was formulated in small quantities in a laboratory. The engineers who operate on production lines within the industry must also take into account the financial constraints and ensure environmental compliance.



150

university speakers
and professionals

Qualifying Major in Quality & Regulation

Quality managers guarantee the reliability and consistency of a product. Quality management positions involve: analysing product batches, writing up procedures and ensuring team compliance with standards. Furthermore, quality managers must have good knowledge of the European and international standards applied to the ingredients used in product manufacturing. Although they have office positions, they may need to go out in the field. They are responsible for the safety and security of the product.



Giving added value

Major in Marketing & Management

Here students learn how to master the marketing and distribution process of a product. This expertise is taught using marketing-related practices for a product launch, i.e.: market studies, brand identity or territory research, establishing the wording, packaging or visuals. In this major, the students also learn how to establish a communication campaign to promote their product. This scientific knowledge of the product is a unique skill that business school graduates do not necessarily have. Our EBI engineers are therefore highly sought after by agencies and companies.



Course exclusively taught in English

At EBI, in order to better prepare our future engineers to work efficiently in the cosmetics, pharmaceutical and food industries, the third year programme (Semesters 5 & 6) is taught in English.

International students are warmly welcome to join our students for one or two semesters to follow this programme which is the first year of the engineering cycle and begins to train students in microbiological applications and industrial processes.

If they so wish, incoming students can also follow English language classes as well as Arabic, Spanish, Japanese, German, Chinese, Portuguese and Italian.

For practical experience, there are possibilities to work on a number of projects in one of our 9 laboratories.

Research

The EBInnov laboratory brings together all the scientific activities carried out by teacher-researchers, students, international interns, and EBI postgraduates through a transversal and multidisciplinary approach.

EBInnov® develops applied research based on innovation, transfer of technologies, patent application and company incubation. The research activities are divided into technological platforms and laboratories each fitted with the latest equipment. Furthermore, the R&D activities meet the industrialists' needs as researchers carry out tasks related to any given sector and its potential issues. Six patents have already been filed.

In addition to publishing more than 40 scientific papers and communications every year, the EBInnov® team also sign 40 industrial contracts and develop 80 innovation projects.

10

laboratories

35

researchers and postgraduate students



Research Laboratories

Research in molecular biology and microbiology.
Contracts with companies for product validation.



Molecular biology Laboratory

Practical work Laboratory: structural and molecular biology, immunology and cell culture.



Microbiology Laboratory

Practical work Laboratory: microbiology and product safety.



EBInnov®

Based in the Val d'Oise, **EBInnov® develops relationships with the Cergy business parks which bring key bio-industry players together:** Mérieux NutriSciences, the Clarins Laboratories, Matis, Air Liquide, Sisley, Sensient-Technologies, Givaudan, Diagnostica Stago, Alès Groupe, Gilson, Takasago. Integrated into the world's largest cosmetic platform, the Cosmetomics® platform is supported by competitive hubs and leading industrial clusters, Cosmetic Valley, Polepharma, Medicen and IAR.



“

Thanks to the support I have received and the state-of-the-art equipment in EBI, I have been able to progress well on my research subject.

Saddam Charaabi,
postgraduate student
at EBI

”

Analytical Laboratory

For pharmaco-chemistry and instrumentation practical work.
Used by researchers and particularly by postgraduates who need to characterise products as part of their thesis research.



Process Laboratory

Equipped with the same production pilots as in industry but on a smaller scale.
Practical work on unitary production: separation, transfer. Practical work on fermentation. Industrial development of processes.



Chemistry Laboratory

Practical work related to general and organic chemistry and biochemistry.



Sensorial panel Laboratories

Contracts with companies to test products before their market launch. The texture, perfume, feel, taste, visual aspect and of course the emotions generated are taken into account.



Formulation Laboratory

Practical work laboratory of reasoned formulation where companies can create products.

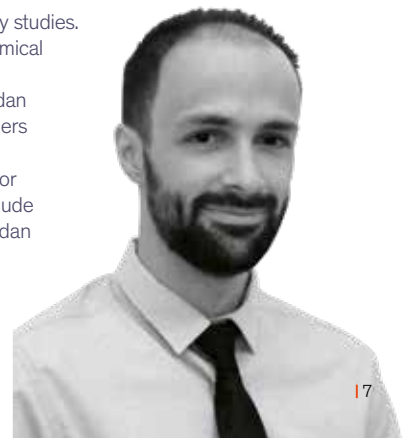
“

He works in biotechnologies

Jean-Pascal Lepetit-Stoffaes, graduated in 2011
I joined EBI through the parallel admission process in the 2nd year of the preparatory programme. I specialised in biotechnological innovation while following engineering, quality assurance and marketing/business development courses.
I carried out four internships in France and the United Kingdom during my studies. I then completed an industrial PhD with Feldan Therapeutics and the chemical engineering department in Laval University in Canada.
I'm currently working as a Business Development Project manager at Feldan Therapeutics, a small biotech company in Canada. I manage several partners (industrial and academic) and liaise with the company to ensure the good development of our patented innovative technology (the Feldan Shuttle) for clinical applications in regenerative medicine. My work mandates also include market intelligence and research activities for the development of the Feldan Therapeutics technology.

EBI'S QUALITIES
Strong scientific background- Adaptability- Dynamism

”



Overview by sector

Approximately 60% of EBI students find employment immediately after graduating. As a leader in the bio-industries and life sciences, EBI trains executives who are operational in all industry-related functions: research, manufacturing, design, marketing, quality management and regulation. The training allows students to be present in four of the most promising sectors on the job market, i.e. agribusiness, pharmaceuticals, cosmetics and the environment.

26%

work in the area of Research & Development



The pharmaceutical industry

25% of our alumni work in this field. Today, there are about 100,000 people working in the French pharmaceutical industry. Approximately 20,000 of these employees work in research and development in one of the 250 medicine companies. The pharmaceutical industry is one of the biggest industries in the world economy and every year some of its most prestigious companies take on 7,000 to 8,000 interns. Over the last five years, the workforce has increased by 13%. EBI's biotechnology programme is ranked amongst the top five in France. Our young graduates work in various pharmaceutical fields as R&D engineers, process engineers, production engineers, validation engineers, project managers...

THE KEY PLAYERS: Pfizer, Novartis, Sanofi, Johnson&Johnson, Pierre Fabre



21%

work in Quality Health & Safety

21%

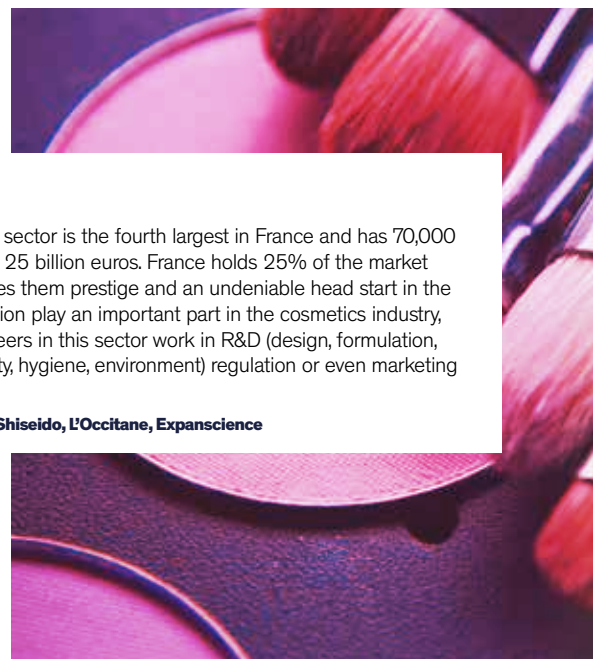
work in Production & Logistics



The cosmetics industry

21% of EBI engineers work in the cosmetics industry. This sector is the fourth largest in France and has 70,000 employees and 1,500 companies generating a turnover of 25 billion euros. France holds 25% of the market share worldwide thus making it the world leader. It also gives them prestige and an undeniable head start in the luxury and active cosmetics segments. Innovation and fashion play an important part in the cosmetics industry, in terms of formulas, production and packaging. EBI engineers in this sector work in R&D (design, formulation, assessment), production and method (process, quality, safety, hygiene, environment) regulation or even marketing (product manager, sales manager).

THE KEY PLAYERS: L'Oréal, Unilever, Procter et Gamble, Clarins, Shiseido, L'Occitane, Expanscience



18%

work in Marketing related professions



The environmental Sector

Today 12% of our alumni work in the environment field. Over 21,000 companies are active in the water, air, soil and noise pollution fields as well as in waste treatment, energy and renewables, measuring instruments and land development to name just a few. Energy, waste and water treatment accounts for 80% of the 140,000 green positions. R&D engineering is the first employment sector. The main employers are engineering companies and consulting firms who accompany their clients in their environmental projects. Our engineers work in process, QHSE (Quality, Health, Safety, Environment) and R&D.

THE KEY PLAYERS: Suez, Veolia, Cofely, Degremont, Brézillon



Agribusiness

A leading industrial sector in France with 500,000 employees. The 18,000 companies offer 30,000 new positions every year. With a balance of 8.1 billion euros, the agribusiness export activity is one of the strongest in the French economy. Today, 11% of our graduates work in agribusiness, 14% if we include the distribution sector. Indeed, companies in this field often design their own brand products and therefore need engineers to supervise production and interact with the manufacturers. Our engineers work for key players but also in smaller active companies. Our alumni are involved in production, development innovation, food quality and safety, manufacturing processes, distribution, marketing...

THE KEY PLAYERS: Nestlé, Danone, Roquette Frères, Candia, Delifrance, Bonduelle



They love working with EBI graduates.

Air Liquide
Akka Technologies
Alten
Altran
Biogaran
Biomérieux
Blédina
Bonduelle Traiteur
Bristol-Myers Squibb
Carrefour
Chanel
Clarins
Consultys
Delifrance
Épicerie Fine Cosmétique
Eurosyn
Galderma
GlaxoSmithKline
Grands Moulins de Paris

Groupe Savencia
Guerlain
Institut Pasteur
Intersnack
Jacquet Brossard
Janssen Cilag
Johnson&Johnson
Laboratoires BLC Thalgo
Laboratoires Expanscience
Laboratoire Servier industrie
Laboratoire Unither
Lactalis
Lesaffre Puricenter
L'Oréal
Lucas Meyer Cosmetics
Materna Opérations
Merial
Mérieux Nutrisciences
Mondelez

Nestlé
Nielsen
Organotechnie
Pâtisserie Pasquier Étoile
Pharmacos
Pierre Fabre
Renault
Roquette Frères
Sanofi Pasteur
Sensient Cosmetics Technology
Seppic
Sisley
Stago
Suez
The Biotech Quality Group
UPSA
Veolia...

Combining passion and career

Internships throughout the students' academic career, project-based pedagogy, entrepreneurship or even tutoring ; EBI's professionalisation approach is solid. Students start acquiring work methods very early in the programme and are very quickly required to work in teams. This allows them to adapt and have a strong understanding of the various professions, qualities that are crucial to meet the challenges of the professional world while at the same time remaining passionate about what they do.

13 months of internship on average

Internship in company

1ST YEAR	Optional internship
2ND YEAR	Compulsory technician internship of 1 to 3 months
3RD YEAR	Compulsory research internship of 2 to 3 months
4TH YEAR	Optional internship
5TH YEAR	Compulsory engineering internship or 6 months employment

Internship abroad

<p>PREPARATORY PROGRAMME</p> <p>A 1 month stay that allows the students to discover new cultures and new ways of living. This stay abroad is validated by a « discovery report »</p>
<p>ENGINEERING CYCLE</p> <p>An internship of minimum 2 months, which allows us to compare our work methods with those of the countries. An internship report validates the internship abroad.</p>

SUPPORT
 METHOD
 TRUST
 SUCCESS
 ORIENTATION
 EXCHANGES
 PROJECT

Project-based pedagogy

It has been a part of EBI's DNA since 1992. The students start working in teams on different types of projects in the first year. Those working on more complex scientific projects not only have access to the EBI laboratories but can also rely on the expertise of our researchers. If they wish, they can also request the help of innovation, industrial protection or company experts or use the EBI environment to prototype their ideas (LabBoite, Technopole de Neuville, La Turbine). Project-based learning allows students to meet both collective and individual objectives. Being supported by a team is essential to improve weaknesses and reinforce strengths.

Tutoring

One of EBI's trademarks is the customisation of each student's academic career through tutoring by our permanent teachers. This makes communicating and exchanging easier, as well as helping students set up customised professional projects. Students can ask the tutors for guidance when choosing their majors or minors according to their professional ambition.



Incubation Future managers

Not including innovative projects conducted as part of the academic career, entrepreneurship mobilises **20% of the engineering** graduates with **134 students** and young alumni pre-incubated and incubated or having created their own company.
(Certified CTI data)



Entrepreneurship

EBI's pedagogy relies largely on managing innovative projects defined with the help of the students, who come up with over 70 projects per year. Student development is based on three major skills: techniques, project management and management. The principles of the learning programme implemented for the development of entrepreneurial skills are used to document innovation: Economy and Business, Integrated Management and company creation. This strategy was established in 1992 when EBI was founded. Since then, EBI has gained national and international recognition and has taken part in several innovation competitions in the environment, food, cosmetics and pharmaceutical industries, all key sectors.

Over the last two years, EBI has taken part in 10 different competitions and won 13 awards.

13

months internships
on average

4,500

companies that recruited
an intern

Focus on the Ecotrophéla competition



Ecotrophéla is the first of its kind to give students an award for food innovation. EBI has been an active change player by entering this competition every year for the past 10 years.

EBI has been awarded prizes in the last three competitions with the **Sel à Saison, Poés'île and Savouchoc projects.**

“

She took part in the Ecotrophéla competition

Alice Rebours, class of 2016

I was awarded a prize with the Sel à Saison project. The Ecotrophéla competition gives us the opportunity to carry out a project which includes company creation. To win the prize, we had to carry out market analysis, design an innovative product, develop the cheapest and most ecological manufacturing process and see how this project could be applied at a pilot scale. This allowed us to have an overall and realistic view of what setting up a company involves. It was very instructive, gave us a good professional grounding and is a “must do” for any future entrepreneur.

”



LISTEN
ING
SHARING
ETHICS
SUCCESS
MANAGING
CREA
TIVITY
INSPIRING
MOTIVATING
CHALLENGING
AFFECT
ORGANISING
SINCERITY
CONVINCING
REWARDING
FEELING
SENSIVITY

Hall of Fame

2,500

active alumni

CHARLOTTE LAHOUE

**Senior Scientist in Immunology,
Sanofi, graduated in 2004**

I am a researcher specialising in immunology. My job consists in carrying out pre-clinical studies for the development of new drugs that modulate the immune response in cancer patients or patients with autoimmune diseases. Besides allowing me to gain good practical and theoretical knowledge of the biological field, EBI also helped me find out what career path I could follow in this field. With this in mind, and after my internships and the projects I worked on, I chose my professional specialisation.

EBI's strengths:

Organisation - Adaptation - Networking



**Managing Director,
Coptis Asia-Pacific, graduated in 2011**

I develop IT solutions for Cosmetics R&D laboratories. I have to manage think tanks and implement long and short-term strategies. Although EBI's training is for specialist engineers, they open it up in a way that enables students to acquire strong academic foundations while remaining pragmatic and flexible. This allows the students to be more versatile, a skill that is a clear asset. EBI engineers are not typical engineers; they are engineers who move with the times and keep abreast of future developments.

EBI's strengths: Understanding of the profession – Sales techniques – Technical expertise

**Technical Service Manager for GSK
Vaccines, graduated in 2007**

**YVES
LE GOFF**

I manage a team of 15 people with very different qualifications (workers, technicians, engineers). My main asset for this position is my ability to communicate. In EBI you do not only learn technical skills. In the fourth and fifth years, EBI students can work on group projects (quality, marketing, process...) where they learn efficient teamwork.

**EBI's strengths: Ability to work in teams -
Communication - Multi-disciplined**



GUY JAECKEL

General Manager, DKSH, graduated in 2010

I am based in Laos where I manage 120 people working in sales, regulation, pharmacovigilance and the supply chain to provide quality medication. EBI's position as a generalist school allows for real versatility. It is also one of the rare engineering schools that trains you in business acumen, a crucial skill for a manager.

EBI's strengths: Project management - Critical and qualitative analysis - Versatility



JEAN-MARC FARRUGIA

Sales Manager Middle East, Suez, graduated in 2008

My team and I are in charge of developing the group's activities in the water and waste sectors for public clients in the Gulf and Iran. This is a new challenging opportunity for me as I left the engineering world to join that of investors, manufacturers and operators. EBI's training stands out because, from the very first year, you are trained to understand the expectations of the industrial world and to apply theories in the practical professional world.

EBI's strengths: Technical skills - Understanding of the professional world - International openness



JONATHAN COEUR



SOPHIE HAYS-FRICHOT

Quality Control Manager, Clarins, graduated in 2011

I'm currently in charge of the quality control of finished products. I manage five technicians, and also deal with the follow up of the first industrial batches during the launch of new references. EBI offers "à la carte" training. Thanks to EBI's major/minor system, the various projects and internships, you can refine your professional project.

EBI's strengths: Reactivity - Ability to synthesise - Adaptability



FRÉDÉRIC DE BRUYNE

Head of Quality, Group Nestlé, graduated in 1995

I am the Quality Manager for all the water related activities in the Nestlé group, which include 100 factories worldwide. What makes EBI's training so original? Its human approach to engineering, the closeness with the teaching staff and its deep sense of industrial reality.

EBI's strengths: Pragmatism - Creativity - Humanism in practice



CAROLINE LAPORTE

Regulatory Affairs Coordinator, Fashion department Chanel, graduated in 2007

When I joined EBI, I wanted to major in Quality and Regulations to work in cosmetics. EBI's general teaching approach allows you to adapt to different sectors of activity. I was able to discover the world of fashion as a method engineer, and more specifically as a REACH project manager, a European regulation on which I had been trained. This level of expertise was instrumental in entering the professional world.

EBI's strengths: Versatility - Multidisciplinary skills - Teamwork

Discovering the world

Level of TOEIC

820

100%

of the students spend at least 3 months abroad

5

months abroad on average

INTERNATIONAL AGREEMENTS

The international dimension is an undeniable asset when working as an engineer. Besides the human experience, it also allows our students to master foreign languages (2 compulsory foreign languages) and have a better understanding of global issues.

Our students get to travel the world as the programme includes:

- A compulsory internship in a company or university for at least 2 months
- A 1 month compulsory stay abroad validated by a « discovery report »
- One or two semesters in a partner university
- Or even a gap year to simply follow their dreams...

Double degree

ALGERIA

■ USTHB Alger

GERMANY

■ University of Technology Cottbus-Senftenberg

BRAZIL

■ Faculty of Pharmaceutical Sciences, Ribeiro Preto

■ Federal University of Ouro Preto

BULGARIA

■ University of Food Technologies, Plovdiv

CANADA

■ University of Sherbrooke

CHINA

■ Jiangnan University

■ Shanghai Institute of Technology

DENMARK

■ International Business Academy

SPAIN

■ University of Pablo de Olavide, Sevilla

■ University of A Coruña

■ Catholic University of Valencia

■ University Autònoma of Barcelona

INDIA

■ Goa College of Pharmacy

■ Chitkara University

ITALY

■ Università Degli Studi di Milano

■ University of Milan

JAPAN

■ Sojo University

■ Osaka Prefecture University

■ Saga University

■ Fukuoka University

LITHUANIA

■ University of Vilnius

NETHERLANDS

■ University of Groningen

PORTUGAL

■ Faculty of sciences of the University of Lisbon

CZECH REPUBLIC

■ Brno University of Technology

ROMANIA

■ University of Petru Poni

UNITED KINGDOM

■ University of Kent

■ University of Cranfield

RUSSIA

■ Ural Federal University

THAILAND

■ College of Management Mahidol University

TUNISIA

■ National Institute of Applied Sciences and Technology

TURKEY

■ University of Nigde



Oriane Georges, graduated in 2017

I spent my first year as an engineering student in Thailand... It was my first time in Asia, but it was clearly not going to be my last! That year completely changed my vision of the world. There I learnt English and discovered a new culture and a new continent. And that was all it took, I'd been bitten by the travelling bug. After completing my fourth year in France, I took a gap year to travel in South America and Oceania, but I made a short stop in Asia. When I came back to France for my last year no one was surprised when I started looking for my end-of-study internship abroad, which I found in Laos (Asia). I did my last internship at DKSH Healthcare, who wanted to keep me on. I've just signed my first contract with them. Thanks to my travelling expeditions, I am a lot more confident, autonomous, patient and I've learnt how to adapt.



BABEL language centre

Students can follow language classes in the Babel language centre regardless of their level. The main objective is to improve both written and oral comprehension. Students can choose three different languages per semester from the following:

- German
- Arabic
- Chinese (mandarin)
- Spanish
- Japanese
- Italian
- Portuguese

Objective “Finding a job”

Implemented by the Managing Director Florence Dufour, under the guidance of key industrial actors in the pharmaceutical (Pasteur-Mérieux-Connaught) and cosmetics (L'Oréal) sectors, EBI has developed privileged relationships with professionals. This is combined with EBI's on-going improvement approach (certified ISO 9001) to train efficient engineers. As of today, over 4,500 companies and organisations have taken on at least one EBI intern.

Fast integration in companies

Attractive remuneration and international challenges

Not only can EBI engineers and young graduates adapt immediately within any kind of organisation, they are also team players ; skills that are highly appreciated in the professional world. They build their careers on three pillars: engineering, biology and industry. This can be seen in the national reference survey (CGE) since 60% of the young graduates get their first job in the company where they carried out their end-of-study internship. 91% of the graduates find employment within 4 months and it only takes them 1.6 months on average to find a position. The average remuneration of €34,650 (bonuses included) is 20% higher than the APEC (Association Pour l'Emploi des Cadres- Agency for the Employment of Managers) national average of bac+5 (5 years of higher education) specialised in biology. The salary is the same, regardless of gender, as EBI implements targeted actions that help graduates negotiate their salary.

The scope of the program allows 93% of the graduates to work in the export field, one in two to work on international assignments and 10 to 15% choose their first position abroad.

€ 34,650

gross annual median salary after graduation

91%

of the graduates find a position within four months of graduating

Industry-oriented alumni

The industrialists and researchers on the Board of Directors and Scientific Advisory Board provide strategic piloting and research advice to the management team. The training program is therefore reviewed on a yearly basis to take into account any new needs. Every year 150 lecturers from partner companies and alumni are invited to speak at EBI; they either organise scientific activities, after-work or co-working sessions. EBI students can rely on the 2,500 alumni (graduate engineers and specialised masters) at any given time and since 2017, the school has supported the alumni association operational actions through loan agreements. The school and alumni therefore work hand in hand to encourage EBI engineers. The alumni support students and research thanks to honorary scholarships and loans and they also play an active part in the teaching program and guiding our young entrepreneurs in their career paths. **You can become a member of the alumni network starting from the 3rd year, and pay the same student rate for the rest of your life!**



He found his job thanks to his internship

Alban Lacaze

I did my internship in Research & Development in a start-up, Enalees. Their objective is to create molecular tests for pets that are accessible to vets. In my first month I learnt how to use the laboratory, got acquainted with the staff and management and found out more about molecular biology. I was very quickly asked to take the lead on several projects and became completely autonomous. At the end of my internship, when I was asked to stay on board as a full-time employee I jumped at the opportunity.

EBIconnect®

Entirely dedicated to the professional career paths of EBI students. The EBIconnect® forum brings together key Bio-industry players and EBI students around the different engineering professions.

During this event, students and young graduates in search of a job are plunged in the industrial world and can meet partner companies or learn more about the professional sectors.

Every year the forum welcomes 80 employees representing 30 companies. A dozen professional conferences and HR workshops run by professionals and former bio-industry employees are organised in the presence of prestigious companies (L'Oréal, Givaudan, Johnson&Johnson, Pierre Fabre, GSK, Mérieux Nutrisciences, Novo Nordisk, Virbac, Stago) and consulting firms (Altran, Akka Technologies, Alten, SPIE, APEC, Kelly Scientifique, APECITA).

This forum is above all an opportunity where students, company managers, engineers, HR managers, consultants and alumni can meet face to face. In addition to professional exchanges, it is a unique and privileged moment for different generations of students and alumni to connect.

EBI students have talent

INSPIRING
LISTENING
SHARING
ETHICS
SUCCESS
MANAGING
CREA
TIVITY
TRUST
MOTIVATING
CHALLENGING
AFFECT
ORGANISING
SINCERITY
CONVINCING
FEELING
REWARDING
SENSIVITY

GEOFFROY MATTHIEU

**Speaker at EBI – Mental preparation –
Support – Coaching**

For several years now I have been a speaker at EBI where I lead creativity and teambuilding seminars based on stage practices and mental preparation. I also provide training on public speaking and limiting beliefs. In my opinion EBI students embody real values. I have met curious, audacious, committed, daring young people who see projects through to the end; they are responsible, tolerant and open-minded.

**Your talent : Helping engineers open up
to others and to the world.**



LAURE VIDAL ROUSSEL

Designer, 4th year student

I'm a self-taught artist, it came to me naturally. The graphic arts community is quite diverse and it is great to see one's work rewarded in a competition. I was ranked amongst the top 10 out of 700 in a publisher's competition (Editions Kana 2016) and in the top 55 in the Maliki Blog competition in October 2016. I designed the laboratory guidelines poster for the school. I was overwhelmed by their trust and I truly hope everyone likes the poster!

Your talent : Conveying a message through art.



**Strategy consultant, QuintilesIMS,
graduated in 2010**

JULIEN OHLMANN

I have stayed in touch with EBI since I graduated, either as a speaker or for student recruitment. The students are autonomous, hard-working and serious, and demonstrate leadership skills that are crucial for engineers.

**Your talent : Your ability to adapt
to any given environment.**



Focus on ENACTUS

Enactus EBI won the 2017 National Competition and represented France at the London World Cup. The National Competition is a great place for students and professionals to meet and exchange ideas. The objective of this competition is to give added value to the entrepreneurial skills of the participants while at the same time giving the latter the opportunity to present the company managers with the conclusions and impacts of their projects. The World Cup is a way to promote our ideas in an international competition where 36 countries and the most committed and prominent schools and universities in social entrepreneurship worldwide are represented.

LADISLAS DE TOLDI

CEO – Founder, Leka, graduated in 2013

In my fourth year at EBI, our Marketing project was to develop a robot for autistic children. This turned out to be a lifetime project, as I went on to create my own company, Leka SAS, to develop and sell this small robot. Our work in quality and marketing lays the foundations of corporate work and provides us with an experience that definitely competes with the best internships.

Your talent : Pleasure in presenting a new product to your public.

MARILYN CHERRIER



General Manager and Founder, Certifirst, graduated in 2008

I helped EBI and its team to obtain the ISO 9001 certification. I also took part in the project assessment of fourth year students and for the last two years, I have provided my expertise for several « Always Managing through Sustainable Development » classes. In 2017 I joined the Association des Anciens (Alumni Association) as Treasurer.

Your Talent : Knowing how to mobilise.



ÉLISE BOURCIER

CEO – Founder, C&DAC SAS – Consulting and Agri-culinary development, graduated in 2014

EBI's main strength is their inter-class network formed by students and alumni from several activity sectors. I was able to rely on this network that I developed from my first year onwards, to advance my professional and entrepreneurial project.

Your talent : Complementary cross-sectional qualities to embark on the business creation adventure.



MAGALI TOUROUDE PEREIRA

CEO of Touroude & Associates, graduated in 2003

I am very attached to EBI. I had joined an engineering program without really knowing what an engineer was and I had a lot of questions about my professional future. EBI guided me and helped me find my career path in industrial property consulting. I created my first company five years ago and then another one that I am currently managing. I am also launching a new digital service, YesMyPatent, a platform unique in Europe that makes patents accessible to all inventors.

Your talent : Innovative entrepreneur for other innovative entrepreneurs.

EBI students stand out in the Enactus competitions

Granny Cendrine

Recycling wood ash from boiler rooms to manufacture and market an environmentally and health friendly detergent that is 100% natural and inspired by a traditional method. Granny Cendrine distinguishes itself by reviving an ancient technique of washing clothes with wood ash, which recycles green waste in a circular economy approach.

Bikkitt

Their mission: Renewing the confidence of the hearing-impaired when riding two-wheelers. We all know what a rear parking aid is. EBI has adapted this technology for bikes. A box fixed under the saddle detects the motor vehicle behind and sends an increasing vibration to the left or right bike handle depending on where the danger is coming from.



An exceptional campus

An exceptional campus: set at the heart of the Horloge Business Park, which is home to nearly 200 companies, EBI's campus benefits from a professional and functional environment with constantly changing infrastructures. It is easily accessible (public transport, car-sharing) and allows students to take part in many different activities including sport and culture.

The campus was inaugurated in 2016 and was designed to place our future engineers in a professional environment.

It has workspaces and creative areas that are adapted :

- to the active pedagogy with its amphitheatres, teaching rooms, rooms available on request and project rooms
- to pedagogical experiments, development and validation of new concepts with its eight laboratories (chemistry, general biology, molecular biology, microbiology, formulation, analysis, production) and two sensorial analysis panels

At the heart of the building there are cafeterias, a rehearsal room and a lounge for students to come together for social and club activities.

On average women represent 30% of the population in engineering schools, but at EBI 80% of the students are female!

“

*As president of the BDE
I have learnt how to manage a
budget and a team through the
good and bad times.*

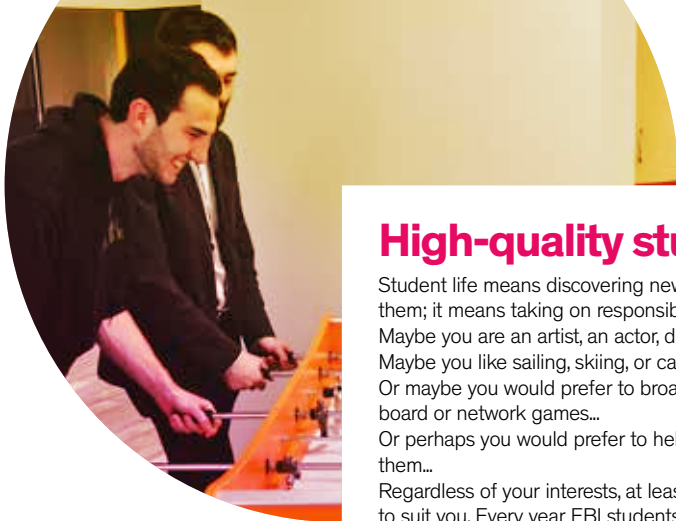
*You have to know how to listen
to the members, support their
ideas and find a solution when
things don't go as planned.*

Lucille Benoit,
3rd year student

”

The Student Bureau (BDE) at EBI

In addition to the other associations, the BDE organises events that bring life to the school and allow it to move forward. Throughout the year we organise inter-class competitions, events to present the other associations, talent fairs, the fifth year graduation ceremony, trips and many other surprises. But that's not all. The BDE also means parties between EBI students and students from other schools in Cergy. Associative life at EBI is essential and students can join many different types of associations: sports, art, cœnology, cinema, humanitarian, social entrepreneurship, organising the school gala... Joining an association involves teamwork, creativity and learning how to see a project through from beginning to end.



High-quality student life

Student life means discovering new talents, improving existing ones and sharing them; it means taking on responsibilities and creating.

Maybe you are an artist, an actor, draughtsman, dancer, writer or musician...

Maybe you like sailing, skiing, or car rallies for fun or in competitions...

Or maybe you would prefer to broaden your film culture, or even share your board or network games...

Or perhaps you would prefer to help others and share your experience with them...

Regardless of your interests, at least one of the 20 associations at EBI is bound to suit you. Every year EBI students create and put on over five shows.

Thanks to the help of professionals, they perform in prestigious and renowned artistic venues.

800

students

Finding financial support

State scholarship holders can join EBI. The request should be made to the CROUS (Centre régional des œuvres universitaires et scolaires), a student representative body dealing with accommodation catering, etc in Versailles by internet (www.crous-versailles.fr) **from January 15th to May 31st.**

Furthermore, EBI has set up a social fund to supplement the CROUS grant or to help international mobility programme students. Finally, we have signed agreements with several banks that allow students to benefit from student loans at reasonable rates.

28,000

students in Cergy

3,500

places in 22 student residences

Eco-responsible campus

EBI is committed to providing quality services. The facilities are therefore audited every year and since 2010 EBI has renewed the ISO 900 certification for its teaching and research activities.

As part of its environmentally friendly approach, EBI is committed to recycling, saving energy with energy-efficient lighting and a controlled and optimised piloting of its heating and lighting. The green areas were designed to reduce the mowing and tree trimming frequency. EBI was also one of the first schools to integrate charging stations for electric cars and bikes in its development project.

6,000 m²

of teaching facilities



Practical information

Admissions

For Degree Seeking students



For Erasmus + students

If you wish to study at EBI as an Erasmus + student, your university must have an Erasmus bilateral agreement with us and you must be nominated by your home university. See page 14 for the list of our partners.

For Study Abroad Students

If your school has no agreement with EBI, please contact us directly at international@hubebi.com for more information.

Contact Admissions

Alexandra Hervin

+33 (0) 1 85 76 66 98 - international@hubebi.com



49 avenue de Genottes - CS90009
95895 Cergy Cedex - FRANCE
+33 (0) 1 85 76 66 90
www.ebi-edu.com

